

# MIGHTY FENCE



The only fence  
you will ever need.

WWW.MIGHTYFENCE.CA

## WHY MIGHTY FENCE?

Our Fence system offers installers and end-users with a strong, well-made and dependable product that will provide many years of maintenance-free privacy and security.

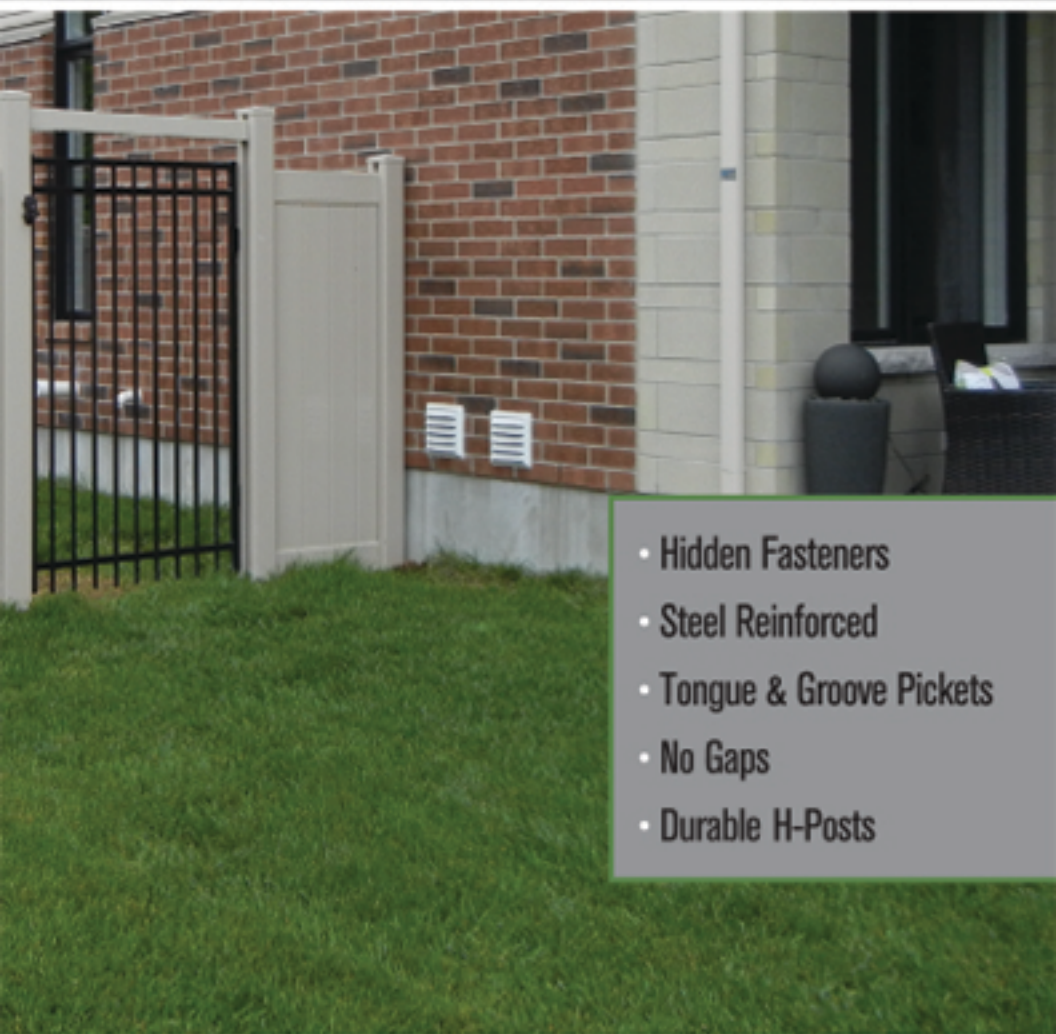
### HOLE PLUGS (5/8")

Concealing all holes offers a clean, finished look as well as reduces water penetration. Hole plugs are available in all colours to match our PVC fence.



## CANADIAN MADE

Supporting Canadian made products is what it means to be Canadian. Because Mighty Fence is produced in Canada, you can be confident we understand the climate and your service expectations.



- Hidden Fasteners
- Steel Reinforced
- Tongue & Groove Pickets
- No Gaps
- Durable H-Posts

## WALL THICKNESS

**T&G PICKET**



**RAIL**



**H-POST**



**C-CHANNEL**



WALL THICKNESS	DIMENSION
0.06 INCH	(7/8" X 6")
0.100 INCH	(2" X 7")
0.130 INCH	(5" X 5")
0.200 INCH	(2.5" X 2.5")

# ENVIRONMENTALLY CONSCIOUS

PVC is the future of fencing and the best product for our climate. Save a forest by looking to new green products for alternatives to the conventional lumber fence. The best sustainable forestry initiative is to find an alternative to wood. PVC is a material that makes sense; recyclable, long lasting and resistant to the elements. Our co-extrusion process enables our PVC to use new material on the exterior, and recycled, green material on the interior. All of our PVC components are 100% recyclable.

## Solid Colours

Interior

Exterior



White

White

## Exterior Colours (Two Tone) PVC Capstock

Interior

Exterior

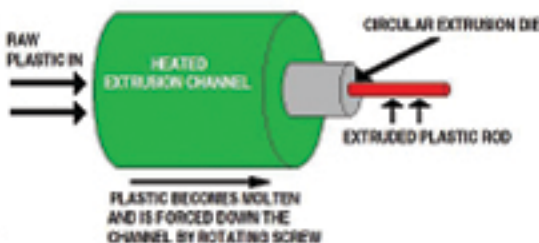


White

Sandstone

## CAPSTOCK

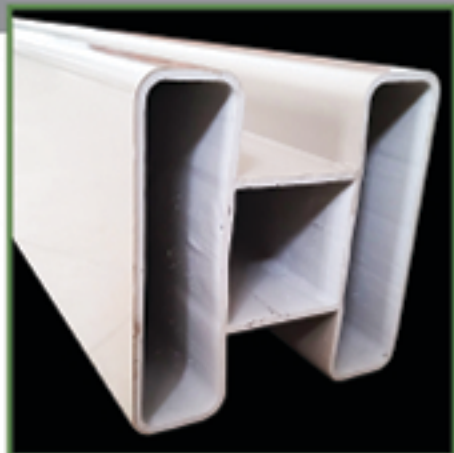
\*All items include 20% capstock. Capstock is a new kind of composite material that combines composites (plastic and wood fibre core) with a durable exterior layer of vinyl (PVC). Think of it as a composite and PVC hybrid.





## POST

Our revolutionary, 5"x5", H-profile post is designed to be a "Mighty" anchor for the fence panels. The opening in the centre of the post sleeves over a common 1 7/8" steel pipe, making it stronger than any PVC or Wood post alone.



## STEEL REINFORCEMENT

Mighty Fence's steel post inserts are the thickest in the industry. Using .100 wall, galvanized steel to reduce post flexibility from wind and other unwanted stresses. (Schedule 40 galvanized inserts are also available by request)



.100 WALL

SCH40

## RAILS

Ribbed 2"x7" rail sets it apart from the rest. It's heavy wall, steel reinforced design, leaves no room for compromise.



## 8 AND 10 FOOT PANELS

The steel reinforced posts and rails are strong enough to allow for a standard 94" spacing between posts without sag or wind damage. Only a Mighty Fence panel has the strength to span 118" from post to post without compromising its structural integrity.

## PRIVACY FENCE



Our 8 and 10 foot panels have the ability to span over unwanted obstacles, such as rocks, roots, concrete, water swales, utilities, etc.

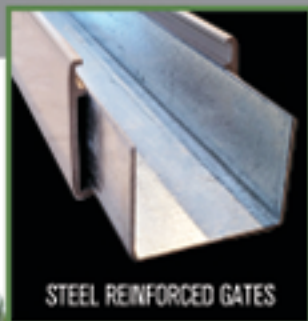
## LATTICE FENCE





## GATES

Our glued gate panels are sag proof. Gate sides are framed with steel reinforcements under the PVC C-channels, adding strength for hinges and latches. Single gate standard widths are 48" and 60" but can be customized to fit any single or double opening. All gates come standard with a nylon latch and hinge set.



## ADJUSTABILITY

The channel in the H-Post is designed to secure the panel in a way that looks clean and is easily adjustable should one want to modify it.

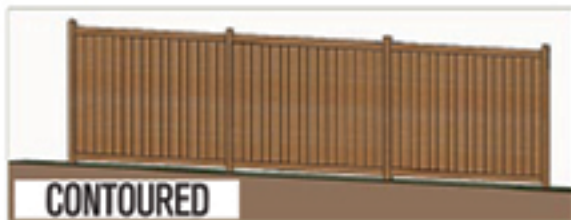
## MAINTENANCE

PVC is a low-maintenance fencing product. We recommend it be cleaned twice a year to protect its finish. Simply rinsing with water out of your garden hose can reduce staining and wash away dirt.

## REPLACEMENT

Mighty Fence is built using 4 separate PVC components. Replacement is made easy due to its simple design. Meaning, damaged components can be replaced without having to replace the entire panel.

## POSSIBLE PANEL CONFIGURATION



- Step-down is the standard configuration.

## POST CAPS



NEW ENGLAND



GOthic



PYRAMID



WHITE



GREY



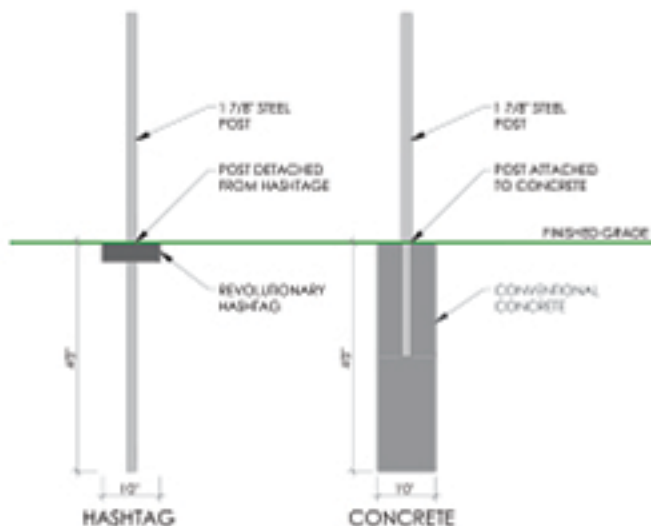
SANDSTONE

## COLOURS

• Custom colours available.

## HASHTAG POSTS

Our patented hashtags provide the same support for the post, without the worry!



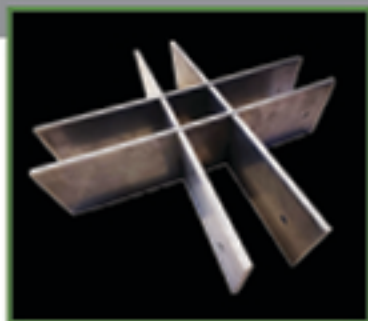
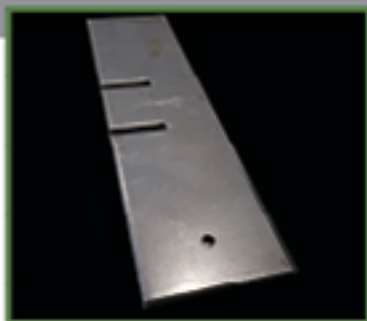
12" GROUND RESISTANCE AT GRADE  
NOT SUSCEPTABLE TO FROST  
EASILY ADJUSTABLE  
EASILY REMOVABLE  
RECYCLABLE  
CRACK RESISTANT  
WARRANTY

### HASHTAG CONCRETE

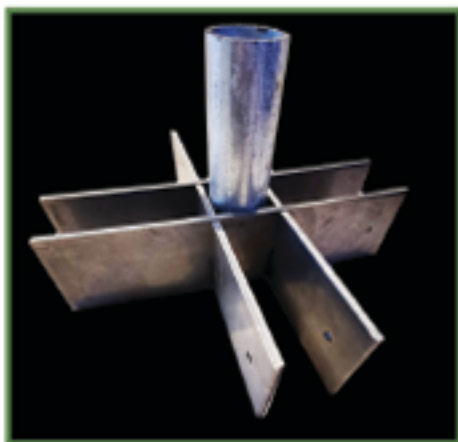


## REVOLUTIONARY HASHTAG

Exclusive to Mighty Fence is its patented Hashtag, replacing concrete footings. With our innovative Hashtag ground support system, you no longer need to worry about our harsh canadian winters. Our standard Hashtag design uses 4 interlocking pieces of 1/4" thick steel 4"x12".



A Hashtag installed 1" subgrade, replaces a 12" concrete footing without risk of settling or frost heaving. Hashtags are a post levelling ground support, proven not to be frost susceptible.

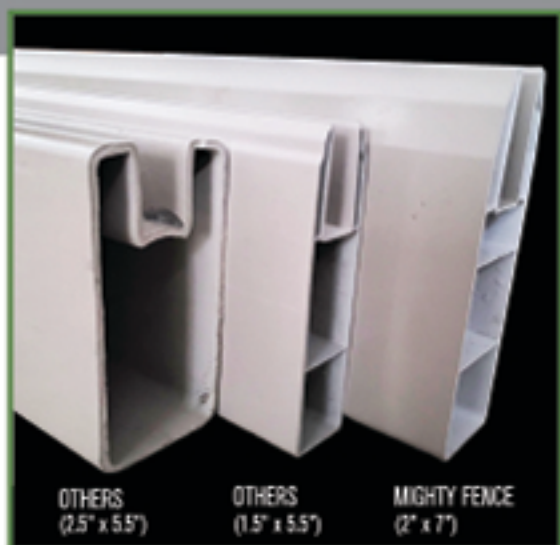


With the fence post and Hashtag support unattached and fully independent of each other, they can both move freely without affecting each other in any way.



## RAIL COMPARISON

Size matters!! Mighty Fence has the largest rail in the industry, and our design has increased strength to alleviate sagging.



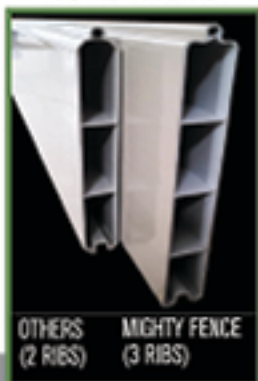
## RIBBING COMPARISON

Mighty Fence has additional support ribs to increase wall support and reduce flex.

RAIL RIBBING



BOARD RIBBING



## FASTENER COMPARISONS

By using thick #12 self-drilling fasteners, you do not have to stress about them breaking. Mighty Fence uses thicker plastic, more ribbing, larger profiles, steel reinforcements and improved fasteners to hold it all together.



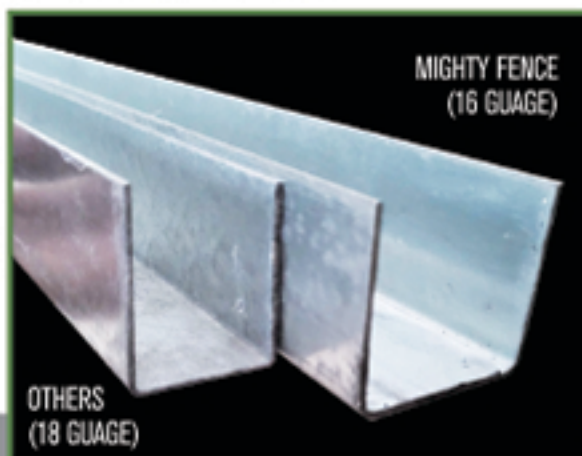
C-CHANNEL FASTENERS



RAIL FASTENERS

## STEEL COMPARISONS

Due to their larger size (2" x 7"), our rails are able to be reinforced with slightly taller and wider steel than the rest of the industry uses.



# MIGHTY FENCE

## OUR PROMISE

Each and every section of our fence has been specifically engineered not to sag, rot, or discolour for as long as you enjoy it. Mighty Fence warrants its vinyl fence products against defects in material and manufacturing workmanship. When installed under normal conditions for proper use, Mighty Fence will not peel, pit, rot, blister, warp, crack, abnormally weather, or be consumed by insects. With prolonged exposure to outdoor environments, all products will experience some gradual fading over time, and are considered normal. This limited warranty will not cover a change in colour due to a buildup of accumulation of stains, dirt, mold, mildew or any other deficiencies caused by lack of any maintenance by the owner. This limited warranty does not cover damage resulting from: misuse, abuse, improper storage, or handling. If such a defect or degradation is discovered, Mighty Fence, at its option, will repair or replace the defective material. This limited warranty does not cover costs of removal or disposal of product, or reinstallation of product replacement.

## HIGHLIGHTS

- Colours are UV protected
- Stain-Resistant with easy cleaning
- No splintering, cracking, or rotting
- Impervious to bug infestation
- Ultra-low maintenance

1-855-699-5095

WWW.MIGHTYFENCE.CA

**MIGHTY  
FENCE**

